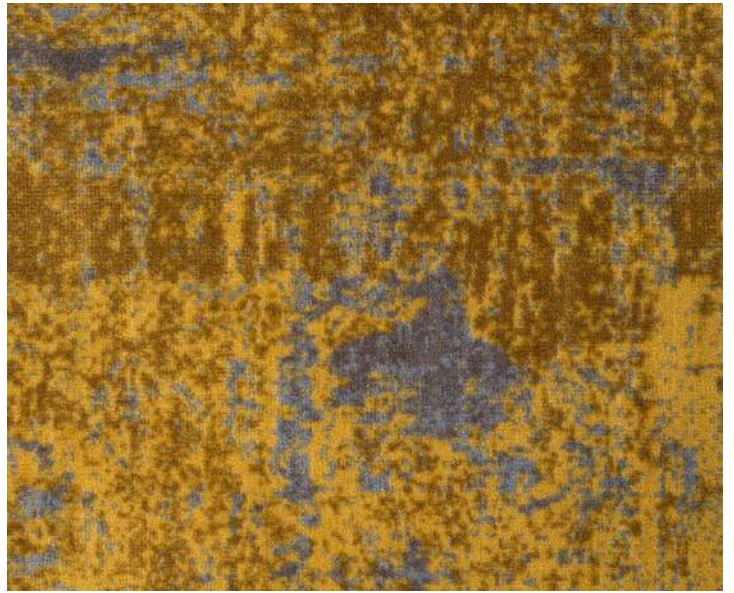


MAGIC

COLLECTION: 100% PA CARPET



MC-1



MC-2



MC-3



MC-4



MC-5

MAGIC

Repeat:
200 x 123 CM

MAGIC

COLLECTION: 100% PA CARPET

SPECIFICATIONS:

Carpet Type:

Wall to Wall or Contract Carpet

Intendent Use:

Heavy Traffic

Production Process:

Chromojet™ Printedet

Gauge:

1 /10 Inch, Cut Pile

Pile Material:

% 100 Polyamide 6 (nylon)

Pile Height:

5.0 mm (finish, +/- %5)

Total Height with:

6.5 mm (finish, +/- %5)

Stitches Per 10 cm:

40 stitches / 10cm (+/- %5)

Tufts Per sqm:

157.200 tufts / sqm (+/- %5)

Pile Weight:

800 gr / sqm (+/- %5)

Total Weight with:

1.900 gr/sqm (+/- %5)

Primary Backing:

Woven Polypropylene

Secondary Backing:

Action Back

Finish Width:

4.00 m and/or Runner Size
(± 1 cm)

MAGIC

Repeat:
200 x 123 CM